

# Quick Start Guide

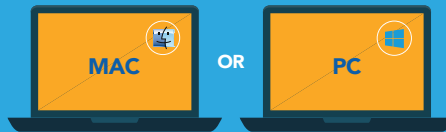


WiPG-2000



WiPG-1600

## CHOOSE YOUR DEVICE



1 Connect your mobile device to the Wi-Fi name below

Wi-Fi name

Password

2 Download the MirrorOp Presenter app

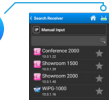


OR

2 Open AirPlay and select wePresent device

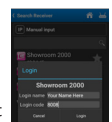
3

- Open app
- Touch wePresent icon
- Drag down to refresh
- Select your wePresent device



4

- Enter 4 digit code
- Press connect



5

- Select the file to present from the left
- Select full screen or quadrant



3 Move Mirroring slider to On position

4 Enter 4 digit code shown on display

5 Present from tablet or mobile device

1 Connect your computer to the Wi-Fi below

Wi-Fi name

Password

2 **DOWNLOAD** OR **ACCESS AS GUEST**

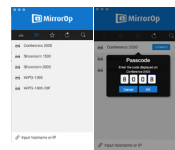
- Open browser
  - Type IP address of the wePresent
  - Click download software
  - Install software
- OR
- Double-click .exe file from USB token
  - or
  - Open browser
  - Type IP address of wePresent
  - Click download .EXE file

### SCAN QR CODE ON STANDBY SCREEN

3

- Launch software
- Click rescan
- Select your wePresent device

\* or input IP address manually \*



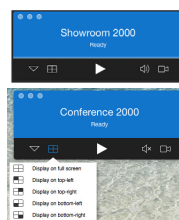
4

- Enter 4 digit code
- Press connect



5

- Press 'play' button for full screen
- Select quadrant icon to display in quad screen



1 Connect your computer to the Wi-Fi below

Wi-Fi name

Password

2 Download the MirrorOp Sender app in the Chrome Store

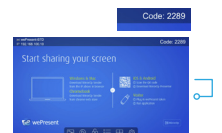


3

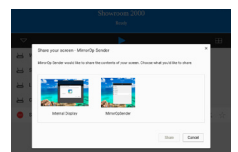
- Launch software
- Connect to wePresent device

4

- Enter 4 digit code
- Press connect



5 Select if you want to mirror your entire desktop, or just a single app



6

- Press 'play' button for full screen
- Select quadrant icon to display in quad screen